

Hardtop Container

20'

ISO Size Type Code: 22 U6

- It has especially been constructed for
 - heavy loads
 - high, and excessively high loads
 - loading, e.g. by crane, through roof opening and door side.
- Floor Height 170 mm - 5mm (Ground level to interior floor surface)
- With the roof removed and the door-header swung out, it is much easier to load cargo using a crane via the door side.
- The steel roof of most series (please see footnote) is fitted with fork-lift rings so that it can be removed by using a forklift. The weight of the steel roof is approx. 450 kg (990 lbs).
- In case your cargo has overheight the roof sections can be lashed to a side-wall inside the container using only some 13 cm (5 1/8) of space.
- If required, we can provide disposable tarpaulins for the transport which can be fastened to the walls on the outside using lashing devices.



- The hardtop container provides many lashing devices to fasten your goods. The lashing devices on the corner posts and on the longitudinal rails of the roof and floor are capable of bearing loads of up to 2,000 kg (4,410 lbs) each, and those in the middle of the side walls up to 500 kg (1,100 lbs) each. Lashing to the side walls can only be done after the roof has been closed.
- Fork-lift pockets for loaded containers.
- Utilizable for bulk cargo.

By request, we can provide filler from top. Please contact our nearest HLCL office

- This container type has been designed for heavy loads. Whilst considering the technical data (including the permissible spreaded load limitations) please bear in mind the prevalent weight restrictions for land transport.

Blumarine Italia: ph: +39 010 8376500 - info@blumarineitalia.com - www.blumarineitalia.com

Hardtop Container

20'

Construction	Inside Dimensions				Weights			Capacity
	Length	Width	Height		Max. Gross kg lbs	Tare kg lbs	Max. Payload kg lbs	
			Middle mm ft	Side mm ft				
	mm ft	mm ft					m ³ cu.ft	

Roof and Door Openings of Hardtop Containers

20'

Roof Openings

Length	Width
B Between gusset plates mm ft	C Max. mm ft

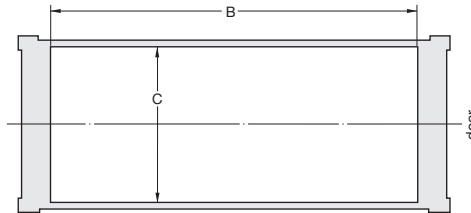
Door Openings

Width			Height	
F Max. mm ft	G At door header mm ft	H Between top rails mm ft	I Up to door header mm ft	K Up to top rail mm ft

Roof lashed to sidewall

Reduced Inside Width		
Max. mm ft	Roof opening mm ft	Door opening mm ft

Roof Openings



Door Openings

