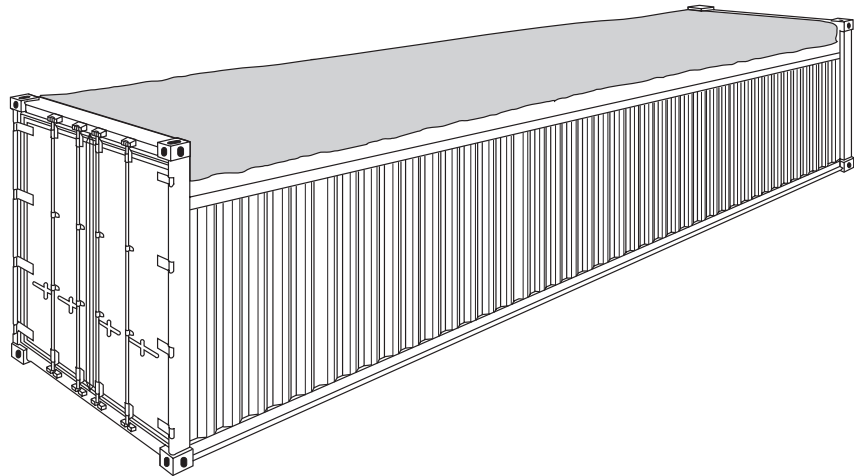


Open Top Container

40'

ISO Size Type Code: 42 U1



- Especially for
 - overheight cargo
 - loading from top side, e.g. by crane
 - loading from door side, e.g. with cargo hanging from overhead tackle
- Floor Height 170 mm - 5mm (Ground level to interior floor surface)
- Door header can be swung out on all open top containers
- Numerous lashing devices on the top and bottom longitudinal rails and the corner posts. Lashing devices have a permissible load of 1000 kg (2205 lbs) each.

Blumarine Italia: ph: +39 010 8376500 - info@blumarineitalia.com - www.blumarineitalia.com

Open Top Container

40'

Construction	Inside Dimensions				Weights			Capacity m ³ cu.ft
	Length mm ft	Width mm ft	Height		Max. Gross kg lbs	Tare kg lbs	Max. Payload kg lbs	
			Middle mm ft	Side mm ft				
8'6" high								
Steel container with corrugated walls, wooden floor and removable tarpaulin	12 029 39'5 1/2"	2 342 7'8 1/8"	2 376 7'9 1/2"	2 326 7'7 1/2"	30 480 67 200	3 810 8 400	26 670 58 800	65,5 2 310

Roof and Door Openings of Open Top Containers

40'

Roof Openings

Length	Width	
B	C	E
	Clearance between header stubs	
mm ft	mm ft	mm ft

8'6" high

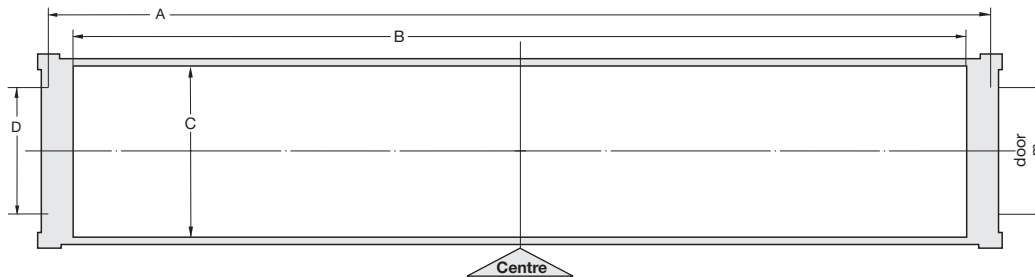
11 544 37'10 1/2"	2 230 7'3 3/4"	1 885 6'2 1/8"
----------------------	-------------------	-------------------

Door Openings

Width			Height	
F	G	C+H	I	K
Max.	Clearance between header stubs	Between top rails	Up to door header	Up to top rail
mm ft	mm ft	mm ft	mm ft	mm ft

2 336 7'8"	1 885 6'2 1/8"	2 230 7'3 3/4"	2 280 7'5 3/4"	2 146 7'1 1/2"
---------------	-------------------	-------------------	-------------------	-------------------

Roof Openings



Door Openings

